



by Schneider Electric

User Manual Easy UPS SNMP Card APV9602

Important Safety Messages

Read the instructions carefully and look at the equipment to become familiar with the device before trying to install, operate, service or maintain it. The following special messages may appear throughout this document or on the equipment to warn of potential hazards or to call attention to information that clarifies or simplifies a procedure.

The addition of this symbol to a Danger or Warning product safety label indicates that an electrical hazard exists that will result in personal injury if the instructions are not followed.



The addition of this symbol to either a “Danger” or “Warning” safety label indicates that an electrical hazard exists which will result in personal injury if the instructions are not followed.



This is the safety alert symbol. It is used to alert you to potential personal injury hazards. Obey all safety messages that follow this symbol to avoid possible injury or death.

⚠ DANGER

DANGER indicates a hazardous situation which, if not avoided, will result in death or serious injury.

⚠ WARNING

WARNING indicates a hazardous situation which, if not avoided, could result in death or serious injury.

⚠ CAUTION

CAUTION indicates a hazardous situation which, if not avoided, could result in minor or moderate injury.

NOTICE

NOTICE is used to address practices not related to physical injury.

Product Description

Integrated with Easy UPS LI SNMP Manager software, devices with the SNMP Card installed can be monitored and controlled in LAN.

APV9602 SNMP Card:

- Provides SNMP MIB to monitor & control UPS.
- Auto-senses 10M /100M/1000M Fast Ethernet Manage and configure via Web Browser or NMS.
- Supports TCP/IP, UDP, SNMP, HTTPS, SMTP, FTPS Protocols.
- Supports SSL/TLS Encryptions.
- Provides easy setup and upgrade tools via Easy UPS LI SNMP Manager software.
- Sends SNMP TRAP; E-mail for events notification.
- Emails daily UPS history report.
- Performs graceful shutdown via Easy UPS LI Shutdown software.

Devices in which you can install the SNMP Card

The SNMP Card can be installed in any compatible device that has an Intelligent Card Slot, including:

- Easy UPS: SMV series UPS

Package Contents

The packaging is recyclable; save it for reuse or dispose of it properly.



(1)

SNMP Card



(1)

User manual



(1)

Utility CD

Disclaimer

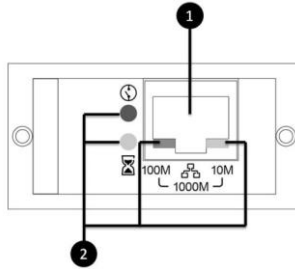
APC by Schneider Electric is not responsible for damage sustained during reshipment of this product.



The SNMP Card is sensitive to static electricity. When handling the SNMP Card, touch only the end plate while using one or more of these electrostatic-discharge devices (ESDs): wrist straps, heel straps, toe straps, or conductive shoes.



Product Overview

Front Panel



①	10/100 Base-T connector	Connects SNMP card to the Ethernet network.
②	Status LED	See “Status LED”.

Status LED

Color LED	Condition	Description
100M LED (Green)	Flash	Port is operating at 100Mbit/s
	Off	Card is not connected to the network
10M LED (Yellow)	Flash	Port is operating at 10Mbit/s
	Off	Card is not connected to the network
 LED(Red)	Flash	Lost UPS connection
	Off	Connecting with UPS
 LED(Yellow)	On	SNMP card is operating
	Off	SNMP card stop working

Note:

The port is operating at 1000Mbit/s when both Green(100M) and Yellow(10M) LED illuminating. DO NOT turn off power when updating firmware. LED (red) will keep flashing.

Specifications

Physical	Dimensions with package Width x Height x Depth	180 mm(7.09in) x 60 mm(2.36in) x 150 mm(5.9in)
	Dimensions without package Width x Height x Depth	51.76 mm(2.04in) x 25.8 mm(1.02in) x 80.31 mm(3.16 in)
	Weight with package	0.3 kg (0.66 lb)
	Weight without package	0.03 kg (0.07 lb)
Temperature	Operating	0 to 60°C (32 to 140°F)
	Storage	-40 to 85°C (-40 to 185°F)
Humidity	Operating	10 to 90% relative humidity, non-condensing
Supported Protocol	Network	Auto-sense 10M /100M/1000M Fast Ethernet Manage and configure via Web Browser or NMS
	Network Protocol	TCP/IP, UDP, SNMP, HTTPS, SMTP, FTPS,
	SNMP MIB	RFC1628, PPC

Installation

Install the SNMP card



Please turn off power to install the SNMP card in a supported Easy UPS.

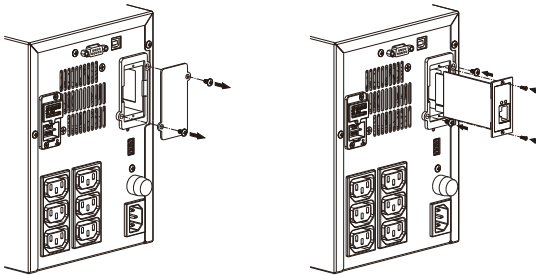


The SNMP Card is sensitive to static electricity. When handling the SNMP Card, touch only the end plate while using one or more of these electrostatic-discharge devices (ESDs): wrist straps, heel straps, toe straps, or conductive shoes.



For the location of the UPS Intelligent Card Slot, see the UPS User Manual.

1. Remove the cover of Intelligent Card Slot on the back of the UPS and retain the screws.
2. Slide the card into the open slot and secure with the screws from step 1. (See below chart)



3. Connect a network interface cable to the 10/100 Base-T network connector (RJ-45) on the SNMP Card.

When the network interface cable is connected, the SNMP Card will attempt to obtain an IP address via DHCP. See “Configuration methods” on page 6.

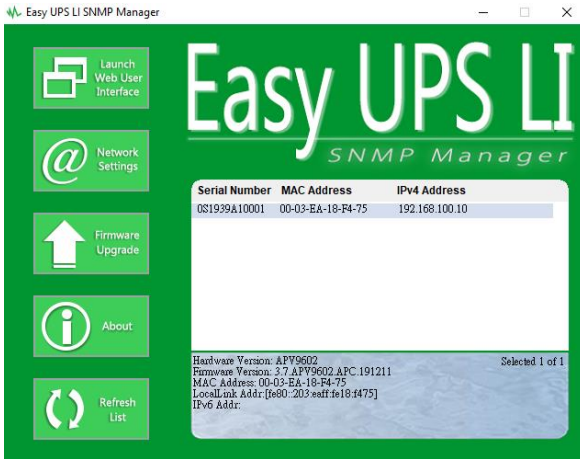
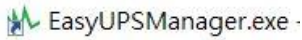
Configure the SNMP Card and Monitoring

See “Quick Configuration” on page 6.

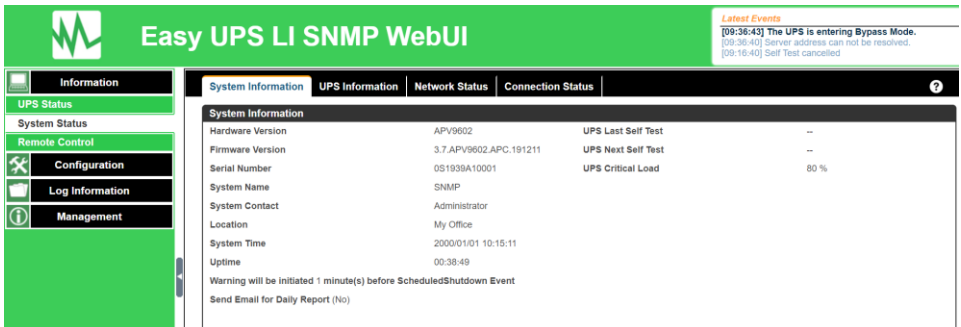
Quick Configuration

Configuration Method

1. Please install Easy UPS LI SNMP Manager software in your PC. When running Easy UPS LI SNMP Manager, it will automatically search available SNMP cards within the network with its serial number, IP address, MAC address. (List refreshes automatically every 2 minutes)



2. Select your SNMP card from the list and click Launch Web User Interface to login to Easy UPS LI SNMP WebUI webpage.



Please check software manual in the CD for more information.

APC by Schneider Electric Worldwide Customer Support

Customer support for this or any other APC by Schneider Electric product is available at no charge in any of the following ways:

- Visit the APC by Schneider Electric website to access documents in the APC by Schneider Electric Knowledge Base and to submit customer support requests.
 - **www.apc.com** (Corporate Headquarters)
Connect to localized APC by Schneider Electric websites for specific countries, each of which provides customer support information.
 - **www.apc.com/support/**
Global support searching APC by Schneider Electric Knowledge Base and using e-support.
- Contact the APC by Schneider Electric Customer Support Center by telephone or e-mail.
 - Local, country specific centers: go to **www.apc.com/support/contact** for contact information.

For information on how to obtain local customer support, contact the APC by Schneider Electric representative or other distributor from whom you purchased your APC by Schneider Electric product.